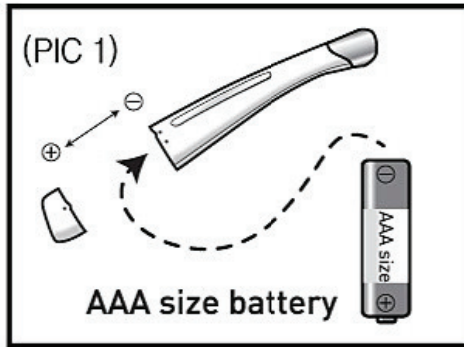
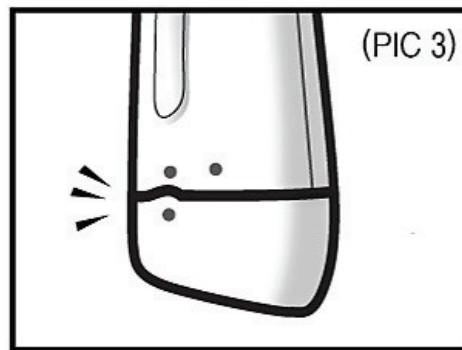
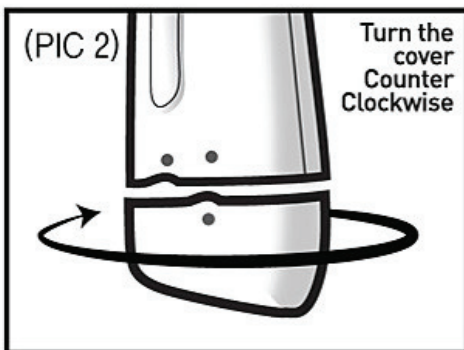


How to use

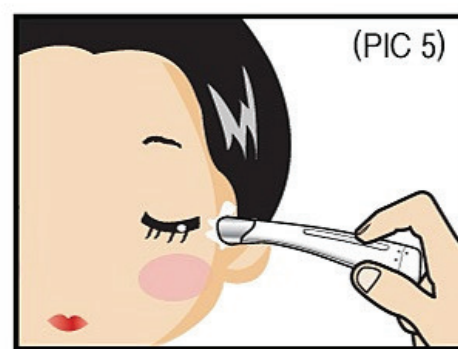


1) Insert the AAA battery in the bottom.



2) Slide the cap and turn to the left

3) Close the cap tightly until you hear 'clinking' sound.



4) Apply eye cream around your eyes.

5) Hold the sensor plate in the middle and place the device on the cream.



6) Massage your face with a facial mask pack sheet on from one side to the other